

ART & WINE MINI RETREAT

2-6 June 2021



A five-day residential or non-residential retreat that encourages you to let go of any inhibitions and enjoy the results of painting and drawing with freedom. From your base at Le 1500 you'll experience a fun-filled stay, sampling the best of our local wines and, should you choose, delicious and stunning dishes in our gorgeous restaurant.



RESIDENTIAL OPTION

WHEN: 2-6 June 2021

PRICE: €985 per person

INCLUDES:

- Four nights' accommodation
- Breakfast, Lunch each day and a Three-course Welcome Dinner including wines
- Wine tastings
- All art materials and tuition
- Use of all guest facilities at Le 1500 (gym, pool, cinema)

NON-RESIDENTIAL OPTION

WHEN: 2-6 June 2021

PRICE: €550 per person

INCLUDES:

- Lunch each day and a Three-course Welcome Dinner including wines
- Wine tastings
- All art materials and tuition

THE PROGRAMME

Wednesday 2 June. Check in from 15h00. Relax & acclimatise. Welcome dinner 19h30 with a range of local wines.

Thursday 3 June. 08h00 Breakfast. 10h00 group introduction & 'letting go'. 12h30 lunch featuring Chateau Le Tap. 14h00 colour tutorial and individual project planning. 17h00 Relax. 19h30 Optional dinner in Le Café 1500 with wine à la carte.

Friday 4 June. 08h00 Breakfast. 10h00 field trip. 12h30 picnic lunch with featured wine, Chateau de Fayolle. 14h00 life drawing class. 17h00 Relax. 19h30 Optional Three-course dinner, Le Café 1500 with wine à la carte.

Saturday 5 June. 08h00 Breakfast. 10h00 Speed drawing. Individual project. 12h30 lunch with featured wine, Clos d'Orsignac. 14h00 Individual project. 16h00 Relax. 17h30 Wine tasting, Chateau Monestier La Tour. 19h30 Optional Poolside BBQ with wine à la carte.

Sunday 6 June. 08h00 Breakfast. 10h00 depart Le 1500. Or stay longer. Just ask us to pull together an extension package for you.

YOUR TUTOR



MICHAEL F RUMSBY. Since shifting from the corporate world to life as a full-time artist in 2012, Mike has enjoyed international success as an expressive landscape painter. His unusual approach to painting has earned him a solid reputation as a painter of joyous, colourful works and is represented by the UK's largest gallery portfolio, Clarendon Fine Art. Mike is a Fellow of the Royal Society of Arts in London.

FOODIES LOVE STAYING AT LE 1500

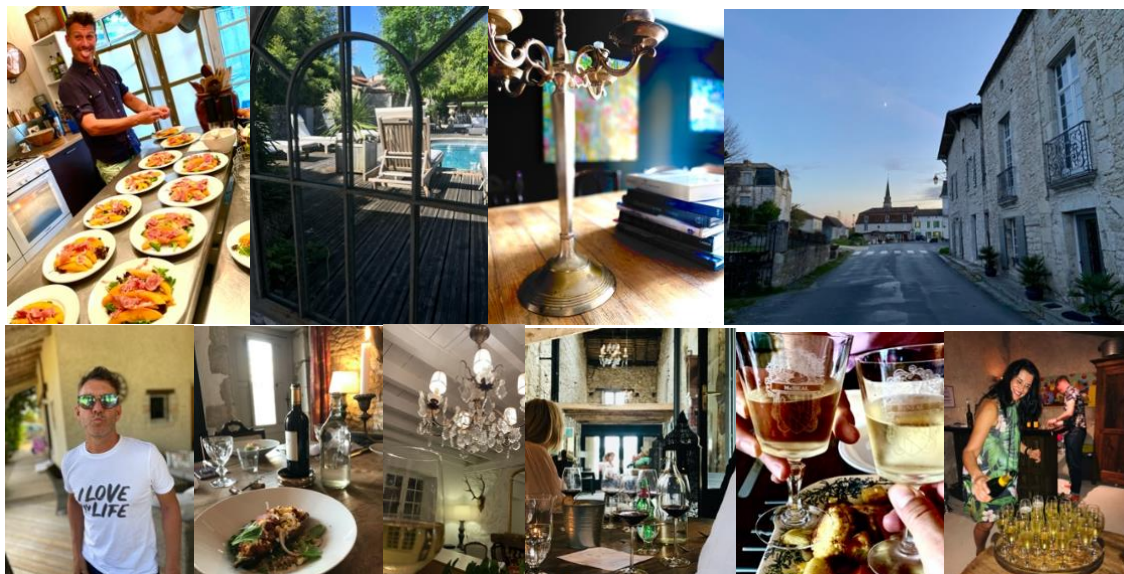
Our reputation for serving beautifully presented, delicious, organic food – all prepared on the premises, on the day – has grown beyond our wildest expectations. Our restaurant is open five days a week to residents and non-residents. As guests of Le 1500 you're entitled to priority reservations. We're also happy to cater for private dinners when we're closed.



THE ACCOMMODATION

Le 1500 is a small group of historic buildings dating back to the Twelfth Century, situated in the heart of Saussignac, a hilltop village in the South West of France. The property is a beautiful marriage of contemporary design and medieval history where guests will find a quiet corner to read a book or join the party zone elsewhere.

Our rooms each tell a story and are beautifully appointed, each with ensuite bathroom and plenty of space to relax as well as sleep. The rooms are equipped with a secure safe, bathroom products and pool towels are provided.



EXPLORE THE REGION

Culturally bursting at the seams with historic cities such as Bordeaux, Bergerac and Sarlat and only 150 minutes from Toulouse, The Nouvelle Aquitaine region boasts some of France's most incredible sights and experiences. Guests can take a day trip to visit an extraordinary number of stunning places. From the vast beaches and dunes of the West Coast (140 minutes) to the UNESCO world heritage site of the prehistory Vézère Valley and the Lascaux Cave paintings. For the more adventurous, get up early and drive across the border into Spain for lunch in San Sebastian (180 minutes). Or stay closer to home and visit one of the area's stunning authentic French markets, visit the world-famous Dordogne Valley with its 1001 Chateaux or just step outside Le 1500 and walk through the thousands of hectares of vineyards on our doorstep.



FLIGHTS

There's no shortage of flight options to transport you to Le 1500. Our nearest airport, Bergerac is a 20 minute car ride and is regularly served by British Airways (London City and Southampton) and RyanAir (London, Liverpool, Bristol and Bournemouth) in the UK. Flights also operate from Belgium and The Netherlands. Bordeaux Airport is a 90 minute car ride (train transport to Gardonne, five minutes from Saussignac, is also possible) away and is served by a variety of international airlines from around the world, as well as internal flights from across France.

We're happy to organise a chauffeur to pick you up from one of the airports or the train station.

CAR HIRE

Car hire is available directly from Bergerac and Bordeaux airports. Alternatively, we're happy to get you to a car hire location in Bergerac once you've settled in at Le 1500. Advance booking is advised especially during peak season. Having a car at your disposal will allow you greater opportunities to explore the region independently.

RESERVE YOUR PLACE NOW

CONTACT LEE OR MIKE AT saussignac@yahoo.com OR BY CALLING +33 6 42 13 93 67

LE 1500
WHERE TIME BEHAVES

WWW.LE1500.ROCKS